

Eterna- the world's most innovative and imaginative brand of unmatched water solutions. Making you confident to get the best for yourself, it leads you to a healthy, happy and comfortable life. In real sense, Eterna is your true friend bringing home the enigmatic impressions! Eterna is brought to you by Kirloskars, synonym to trust for over twelve decades. It is Kirloskar's declaration to the art and science of finding innovative ways of making water available for mankind that manifests in Eterna.

Distribution Sector

KIRLOSKAR BROTHERS LIMITED

Corporate Office :

"YAMUNA", Survey No. 98 (3-7), Baner,
Pune - 411 045, Maharashtra (India)
Phone: +91-20-27214444 E-mail: mktg.dis@kbl.co.in



Visit us at : www.kirloskarpumps.com



Customer Service & Spares (CSS)
Call Toll Free: 1800 103 4443

ISO 9001
ISO 14001
OHSAS 18001
BUREAU VERITAS
Certification



In our constant endeavour to improve the performance of our products/ equipment, we reserve the right to make changes or alterations in the same from time to time. As a result, our products/ equipment may differ from what is detailed in this publication. For latest information/ updates, please get in touch with us.

Regional Sales Offices: AHMEDABAD: (079) 26583739, BANGALORE: (080) 23619914, BHOPAL: (0755) 4218341 BHUBANESWAR: (0674) 2536421, CHENNAI: (044) 28156546 DEWAS: (07272) 228582 JAIPUR: (0141) 2223830 KOCHI: (0484) 2206651 KOLKATA: (033) 24615065 LUCKNOW (0522) 2326367 MUMBAI: (022) 25289320-28 NAGPUR: (0712) 2234275 NEW DELHI: (011) 41501055 to 62, PUNE: (020) 24440770, SECUNDERABAD: (040) 60874700

070701



Enriching Lives

eterna™
exciting water solutions

NEW AGE SOLUTION FOR UNIFORM PRSSURE
HYGIENIC SUPPLY OF WATER



KIRLOSKAR BROTHERS LIMITED
Distribution Sector

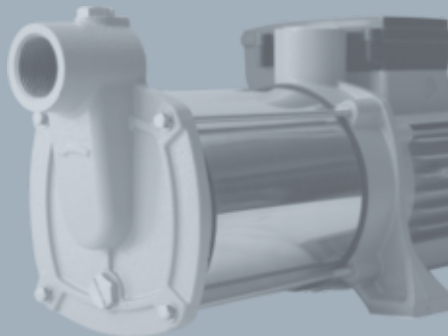


APPLICATIONS

- Lifting water to apartments and bungalows
- Pumping water from shallow wells and tanks
- Suitable for pressure boosting system

Unleashing the range of enticing products, here is 'Eterna' Hi-Lifter.

Made of high quality engineering materials like stainless steel, aluminum and industrial plastic, it is exclusively designed to develop high pressure for lifting water up to 7-8 floors. This coupled with reliability and quite working facets make Hi-Lifter an ideal choice for pressure boosting system worldwide. This is one essential convenience every modern household should look for, get one for yours today!



FEATURES

- Corrosion, erosion and rust-free, maintains water hygienic & safe for drinking
- Suitable for lifting water to greater heights with higher pressure
- Dynamically balanced rotating components for consistence performance
- Base support for stability and reduction in noise/vibrant
- Thermal overload protector to prevent motor burning
- Self-priming with elegant looks
- Ready for conversion into a new generation pressure boosting system

MATERIAL OF CONSTRUCTION

Part	Single Stage (HL)	Multi Stage (HL MS)	Particle pump (HL SP)
Pump casing	Stainless Steel	Stainless Steel	Cast Iron
Impeller	Stainless Steel	Noryl	Noryl
Shaft		Superior Steel	
Mechanical Seal		Carbon / Carborundum	

PERFORMANCE OF HI LIFTER

Performance at 220V Rated Voltage, 50Hz, Single Phase A.C. Power Supply.

Hi Lifters (Single-Stage)

Model	Rating		Total Head in Meters											
	kW	HP	40	36	34	30	26	22	20	16	12	8	5	3
			Discharge in Litres per Minute											
HL23	0.37	0.5							8	13	20	30	40	50
HL35	0.3	0.4			2	7	12	19	24	42	46	49		
HL37	0.37	0.5		2	3	11	18	30	37	45	49	52		
HL42	0.6	0.8	3	12	18	28	36	42	45	48	51	54		

Pipe Size : 25 mm (Suction) x 25 mm (Delivery)

Hi Lifters (Multi-Stage)

Model	Rating		Total Head in Meters											
	kW	HP	50	46	42	38	34	32	30	26	22	18	14	10
			Discharge in Litres per Minute											
HL32MS	0.75	1							16	36	48	57	63	70
HL42MS	1.1	1.5			6	24	36	42	45	51	57	63	69	75
HL52MS	1.1	1.5	12	27	36	44	51	54	56	61.5	65	69	72	

Pipe Size : 25 mm (Suction) x 25 mm (Delivery)

Hi Lifters (Particle Pump)

Model	Rating		Total Head in Meters					
	kW	HP	50	43	40	38	31	1
			Discharge in Litres per Minute					
HL-52 SP	1.1	1.5	12	24	36	48	60	72

Pipe Size : 32 mm (Suction) x 25 mm (Delivery)

HI - LIFTER

HI - LIFTER